

*sacculus laryngis sin.*

*nodulae laryngeae*

*arytenoideus*

*vocalis*

*ae*

*a*

*rmis pharyngis*

*sacculus laryngis dexter*

*ventriculus laryngis*

*plica vocalis, rim*

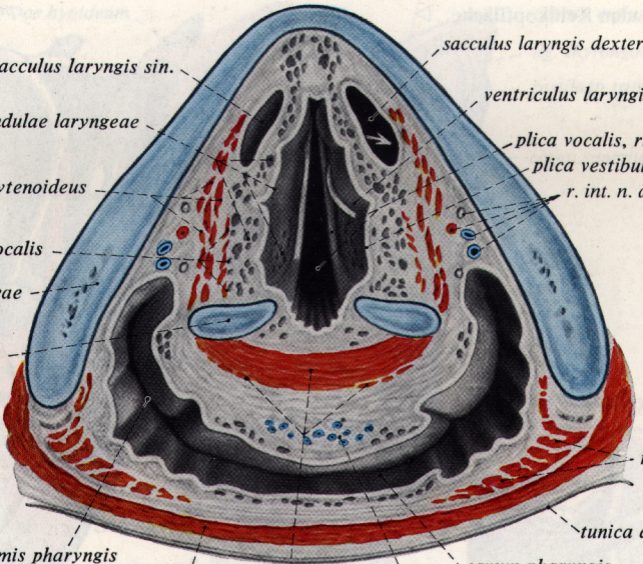
*plica vestibula*

*r. int. n. a.*

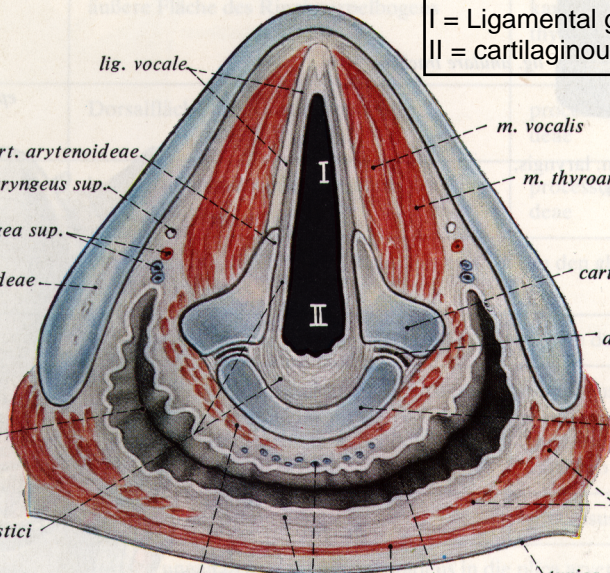
*m*

*tunica ac*

*cavum pharyngis*



I = Ligamental gl  
 II = cartilaginous



*lig. vocale*

*art. arytenoideae*

*laryngeus sup.*

*epiglottis sup.*

*arytenoideae*

*aryepiglotticus*

*thyroarytenoideus*

*thyroideus*

*thyroideus*

*thyroideus*

*thyroideus*

*thyroideus*

*thyroideus*

*thyroideus*

*thyroideus*

*m. vocalis*

*m. thyroarytenoideus*

*cart. thyroidea*

*art. arytenoideae*

*tunica albuginea*