

Fig. 31 Some of the possible movements of the lips under the influence of the main labial muscles.

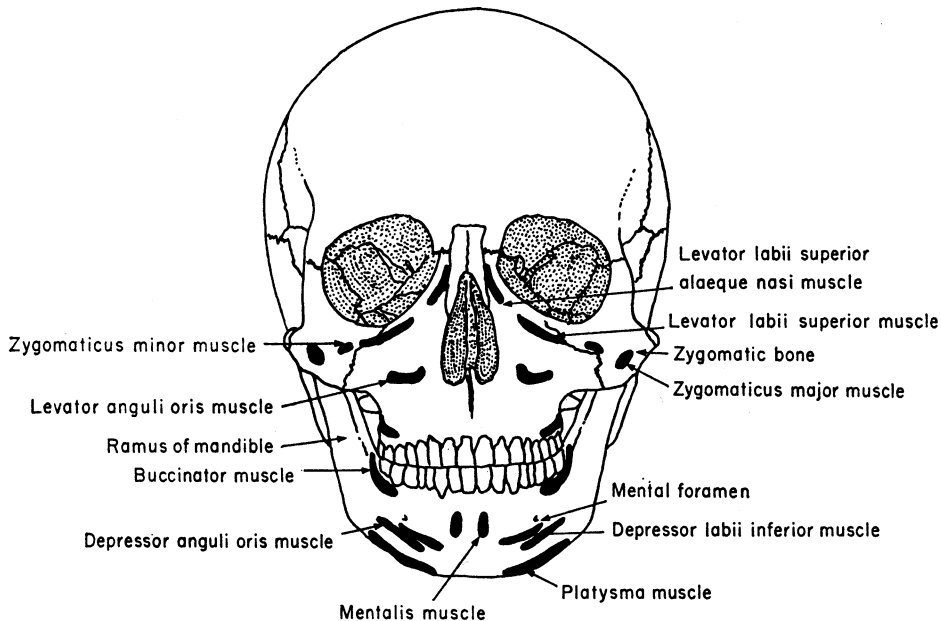


Fig. 32 Frontal view of skull showing the points of attachment of the main labial muscles (after Cunningham, 1964).

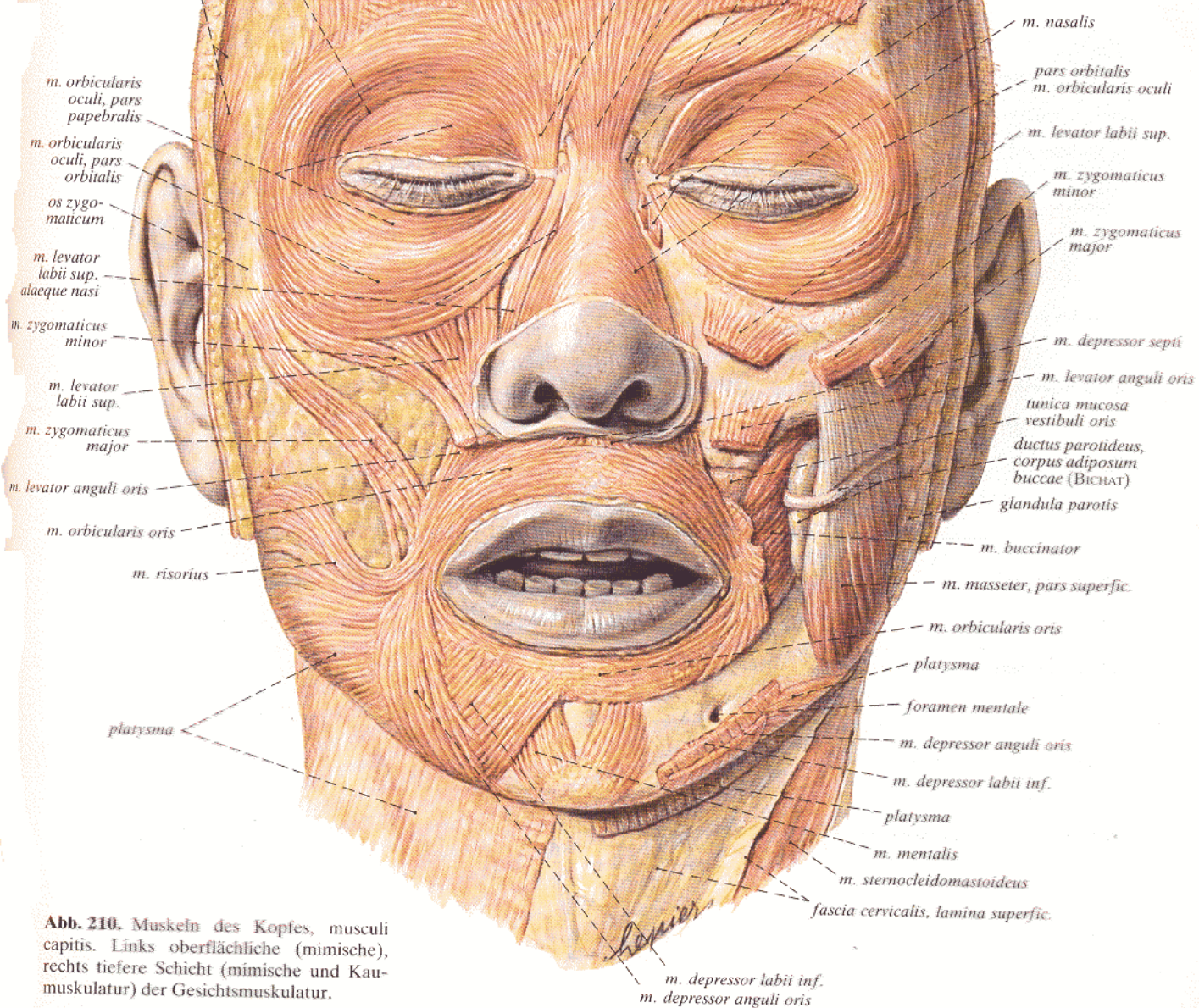
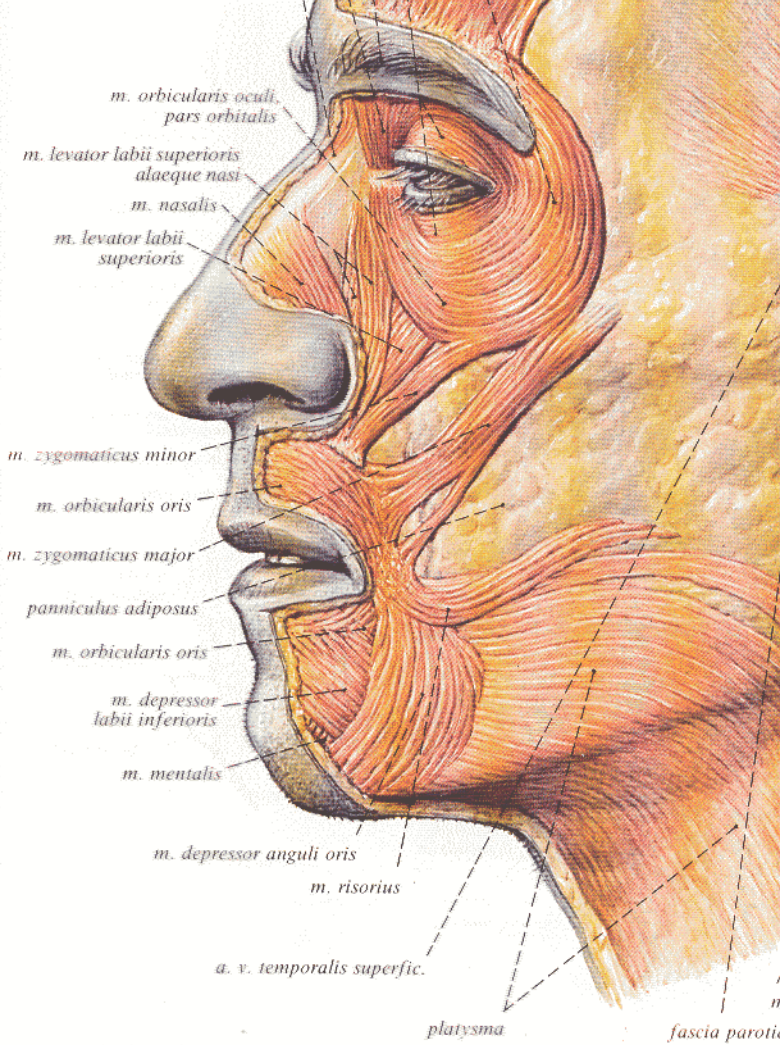


Abb. 210. Muskeln des Kopfes, muscoli capitis. Links oberflächliche (mimische), rechts tiefere Schicht (mimische und Kau-muskulatur) der Gesichtsmuskulatur.



*lig. palpebrale
med.*

os nasale

*m. levator
labii sup.
alaeque nasi*

*m. levator
labii sup.*

m. nasalis

*m. zygoma-
ticus minor*

*m. levator
anguli oris*

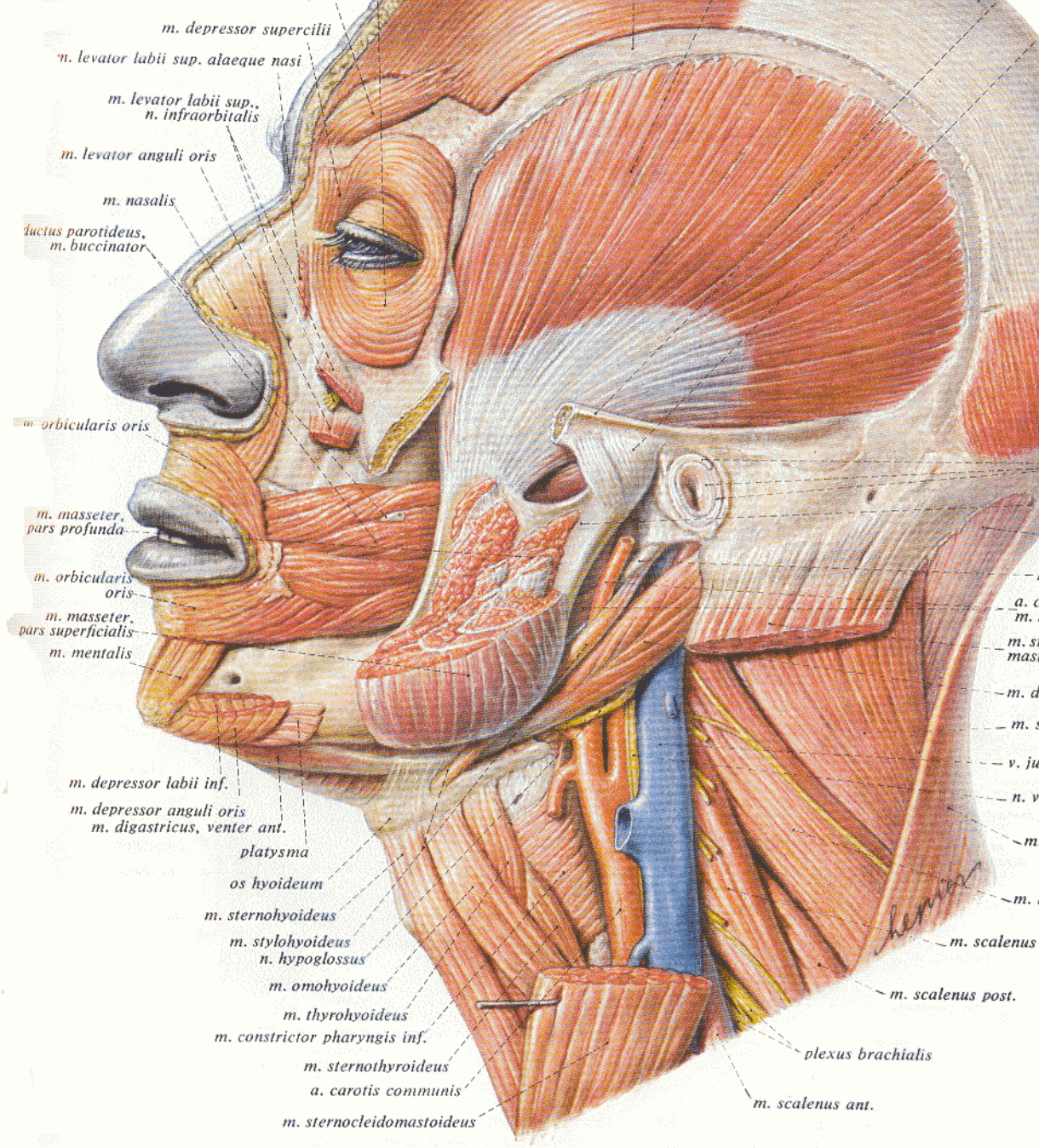
*m. orbicu-
laris oris*

*m. zygoma-
ticus major*

*m. depressor
labii inf.*

m. mentalis

m. orbicularis oris



m. depressor supercilii

m. levator labii sup. alaeque nasi

*m. levator labii sup.,
n. infraorbitalis*

m. levator anguli oris

m. nasalis

*ductus parotideus,
m. buccinator*

m. orbicularis oris

*m. masseter,
pars profunda*

*m. orbicularis
oris*

*m. masseter,
pars superficialis*

m. mentalis

m. depressor labii inf.

*m. depressor anguli oris
m. digastricus, venter ant.*

platysma

os hyoideum

m. sternohyoideus

*m. stylohyoideus
n. hypoglossus*

m. omohyoideus

m. thyrohyoideus

m. constrictor pharyngis inf.

m. sternothyroideus

a. carotis communis

m. sternocleidomastoideus

*a. c.
m.*

*m. s.
mas*

-m. d.

-m. s.

-v. ju.

-n. v.

m.

m.

m. scalenus

m. scalenus post.

plexus brachialis

m. scalenus ant.

L. Henning

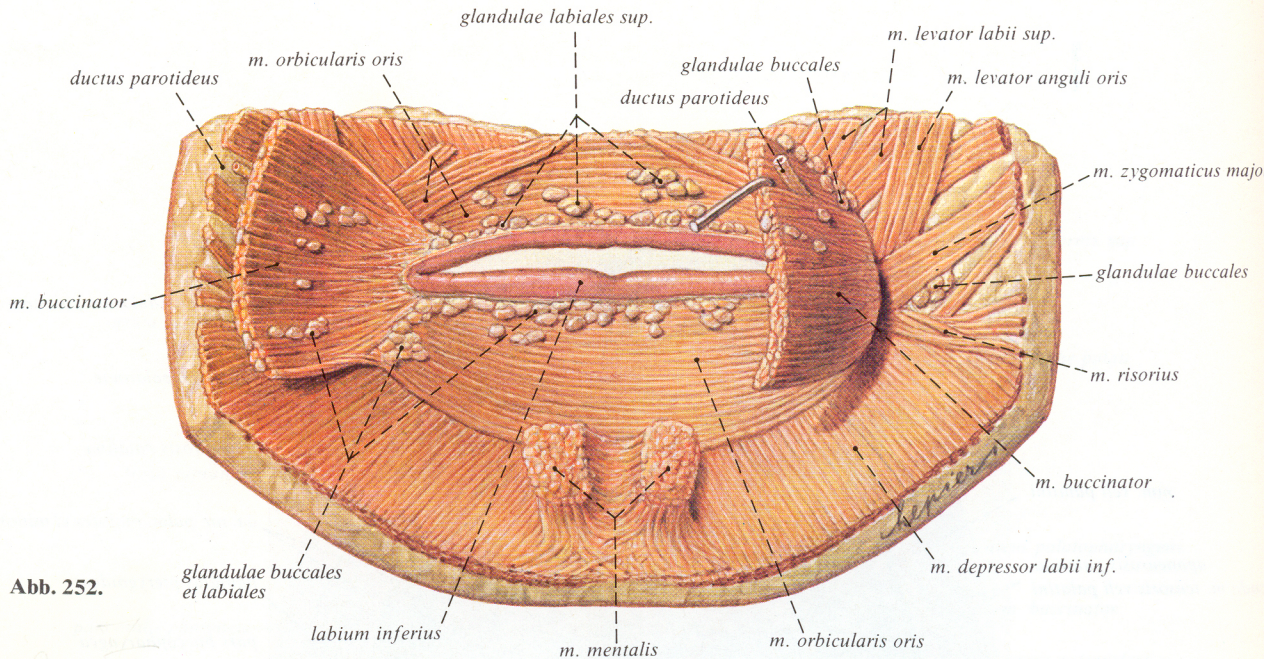
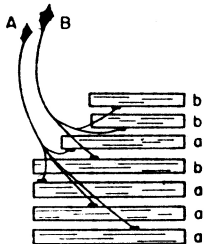


Abb. 252.

Motor units

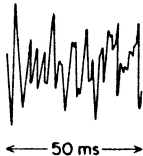


Electromyograms

Single units



Interference pattern



Schematic illustration of; left, motor units; center, the muscle action potential of a single motor unit; right, an interference pattern.