

Utilizing the EMU-SDMS and BAS Web Services in big data analysis

Raphael Winkelmann, Florian Schiel, Klaus Jänsch
raphael|schiel|klausj@phonetik.uni-muenchen.de


Institut of Phonetics and Speech Processing, Ludwig Maximilian University of Munich

The tools

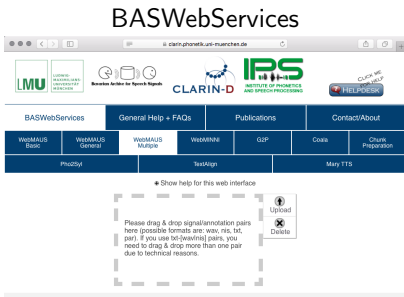


A web page



A bird that loves 

The tools: BASWebServices



BASWebServices

General Help + FAQs Publications Contact/About

WebMAUS Basic WebMAUS General WebMAUS Multiple WebMAUS G2P Coars Chunk Preparation

Pho2Syl TextAlign Many TTS

Show help for this web interface

Please drag & drop signal/annotation pairs here (possible formats are: wav, nis, txt, par). If you use txt-(wav/nis) pairs, you need to drag & drop more than one pair due to technical reasons.

Upload
Delete

WebMAUS (Basic/General/Multiple)

G2P

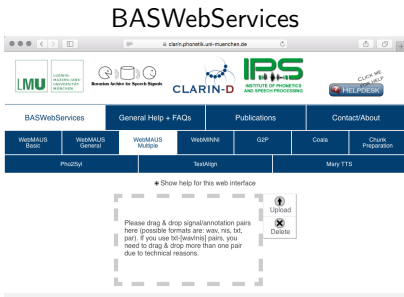
Chunk Prep.

Pho2Syl

...

<https://clarin.phonetik.uni-muenchen.de/BASWebServices/>

The tools: BASWebServices



WebMAUS (Basic/General/Multiple)

G2P

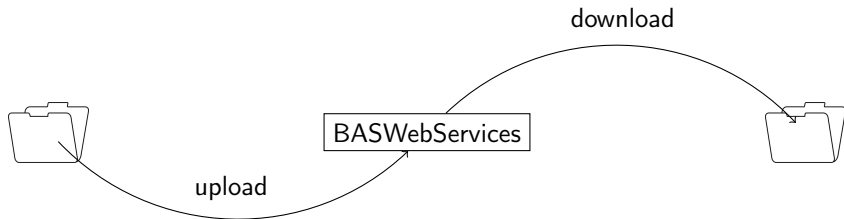
Chunk Prep.

Pho2Syl

...

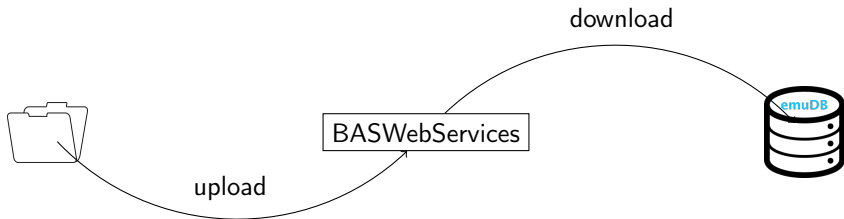
<https://clarin.phonetik.uni-muenchen.de/BASWebServices/>

The tools: BASWebServices



<https://clarin.phonetik.uni-muenchen.de/BASWebServices/>

The tools: BASWebServices



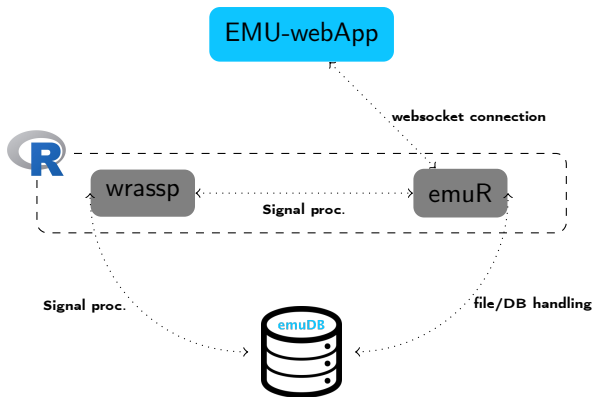
<https://clarin.phonetik.uni-muenchen.de/BASWebServices/>

The tools: The EMU Speech Database Management System (SDMS)



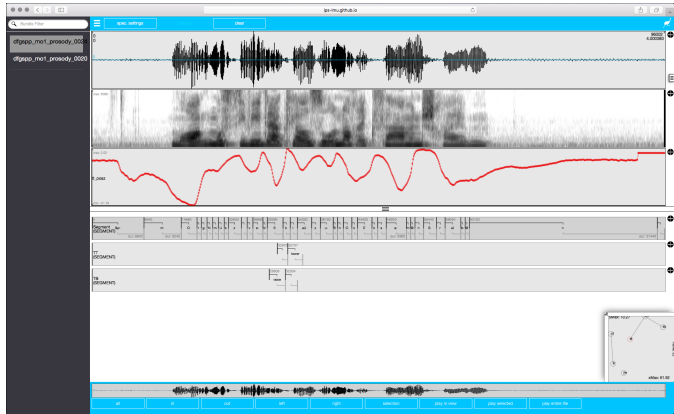
<https://ips-lmu.github.io/EMU.html>

The tools: The EMU Speech Database Management System (SDMS)

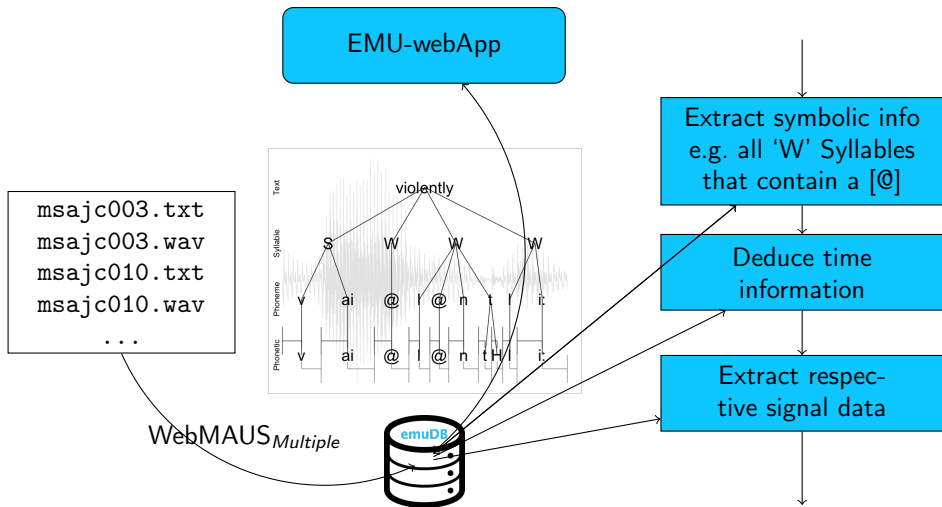


<http://ips-lmu.github.io/EMU.html>

The tools: The EMU Speech Database Management System (SDMS)



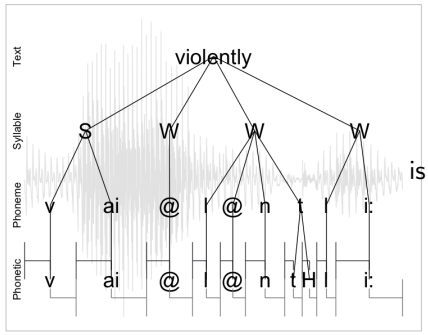
Schematic workflow of tutorial



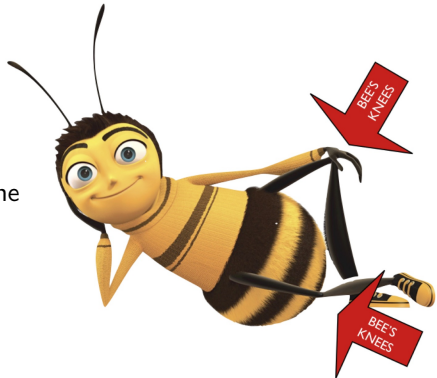
Target audience of tutorial

Target audience of tutorial

Everyone who thinks automatic hierachical phonetic segmentation and labeling like



is the



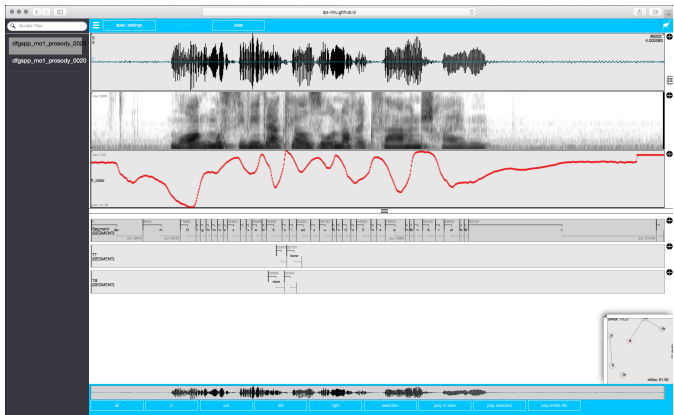
for big data analysis

Target audience of tutorial



Anyone who uses R as part of the speech database analysis tool chain (statistics / visualization / ...)

Target audience of tutorial



Anyone who thinks a full client-side webApp for collaborative labeling is what has been missing from their life

Target audience of tutorial

Looking for answers to questions like this?:

- ***Do the phonetic segments labeled s, z or ʃ (sibilants) differ with respect to their first spectral moment?***
- The EMU-SDMS can help you answer them with only **four** R commands

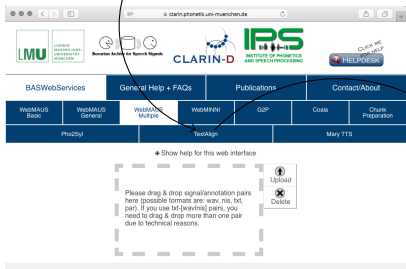
Target audience of tutorial

Looking for answers to questions like this?:

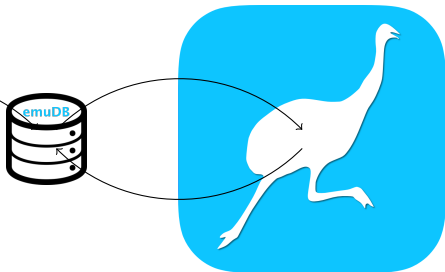
- *Do the phonetic segments labeled s, z or ʃ (sibilants) differ with respect to their first spectral moment?*
- The EMU-SDMS can help you answer them with only **four** R commands

Target audience of tutorial

```
msajc003.txt
msajc003.wav
msajc010.txt
msajc010.wav
...
```



BASWebServices: WebMAUS *Multiple*



EMU-SDMS

Thanks

...and see you this afternoon!

- <https://clarin.phonetik.uni-muenchen.de/BASWebServices/>
- <https://ips-lmu.github.io/EMU.html>