



# Atlasi i sintaksës dialektore të gjuhës shqipe (ASDGJSH): të reja në rrafshin sociolinguistik

Enkeleida Kapia

# First: THANK YOU



Ludmila Buxheli



Anila Omari



Stefano Coretta



Mareva Zenelaj

# Dialect Syntax as a Neglected Sub-System

- Most neglected linguistic sub-system in classical dialectology (Berger et al, 2012)
- One of the most neglected areas in Albanology (Beci, 2017; Çeliku, 2017)

# Disbelief about Dialect Syntax

- Löffler (2003) seriously questions whether there are genuine dialectal syntactic rules at all, arguing that syntactic properties often attributed to dialects, in fact, reflect just deviations commonly found in spoken registers in general.
- Çeliku (2019) is of the opinion that “disa prej këtyre dukurive ... pa një shtrirje territoriale krahinore qartësisht të përvijueshme”.
- Beci (2019) also describes how “të dhënat për këto veçori ishin fragmentare, pra, jo të vetëmjaftueshme për të përcaktuar shtrirjen e tyre dhe aq më pak rolin e tyre në përcaktimin e strukturës dialektore të shqipes. ”

# Dialect Specificity of Syntactic Patterns

- The only way of proving the dialect-specificity of a syntactic pattern is cross-dialectal micro-comparison (Lötscher, 2004)
- The only irrefutable proof for the existence of genuine dialectal syntactic rules is the discovery of syntactic isoglosses (Glaser, 2017)

# Interest in Dialect Syntax

- Comes from two directions
  - Formalist syntactic models
    - The study of dialect variation made it possible to determine more precisely the nature of syntactic parameters since dialect variation presents us with the smallest possible contrasts between otherwise very similar grammars.
  - Functional typology studies
    - The description of the typological landscape of Europe has been biased in favor of the codified standard varieties. Inclusion of vernaculars became a necessary corrective to fix that knowledge. Note in particular also “the distinction between spoken and written varieties has consequences for language typology.” (Weinert, 1998)

# Research Questions

1. What are the isoglosses of dialect syntax features and how do they compare with the isoglosses of the ADGJSH?
2. Can the methodology of online data collection be used to shed light about the dialect syntactic structures of Albanian?
3. Can dialect syntax features be used to illustrate the historical dialect divisions of Albanian, and, if so, what can they show us?

# Methods and Data Collection

- 1300 native speakers of Albanian in 2019-2020
- Online questionnaire using Google Forms

Zgjidhni formën që përdorni në të folmen tuaj (jo në gjuhën standarde). \*

- Shkova ne/në dentisti.
- Shkova te/ke dentisti.
- Other...

⋮

Zgjidhni formën që përdorni në të folmen tuaj (jo në gjuhën standarde). \*

- U ka ngrit nga buka.
- U ngrit nga buka.
- Other...



# Geo Points in This Study

- Geographical points only within Republic of Albania and Kosovo

# Analysis

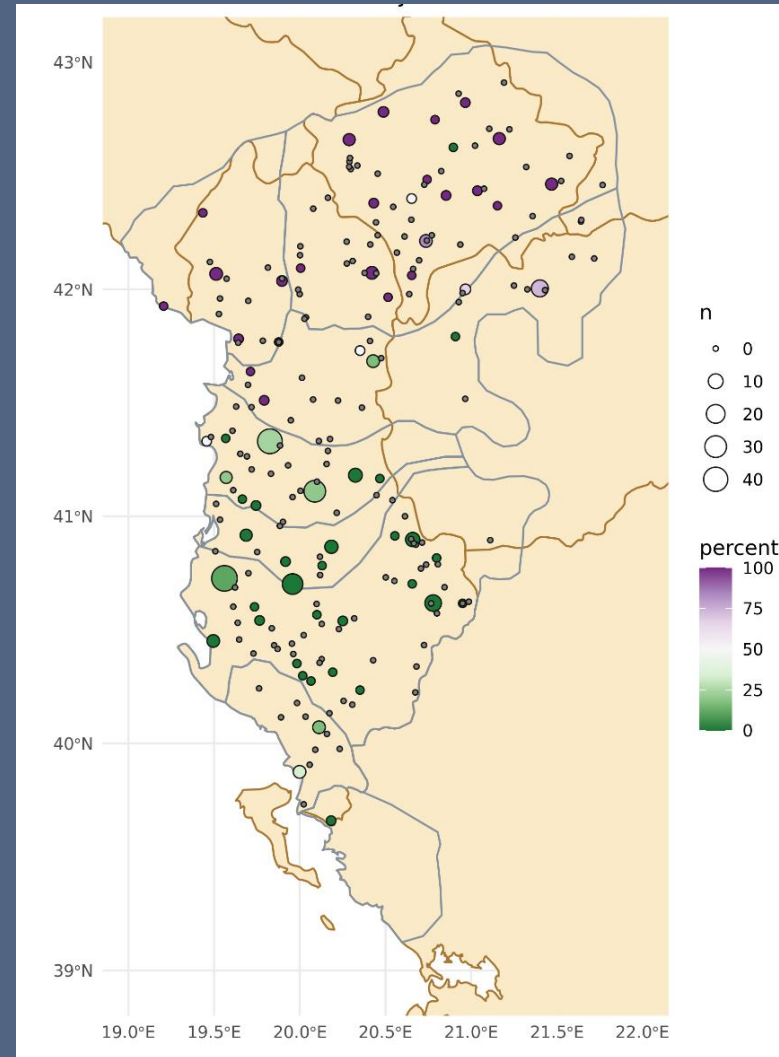
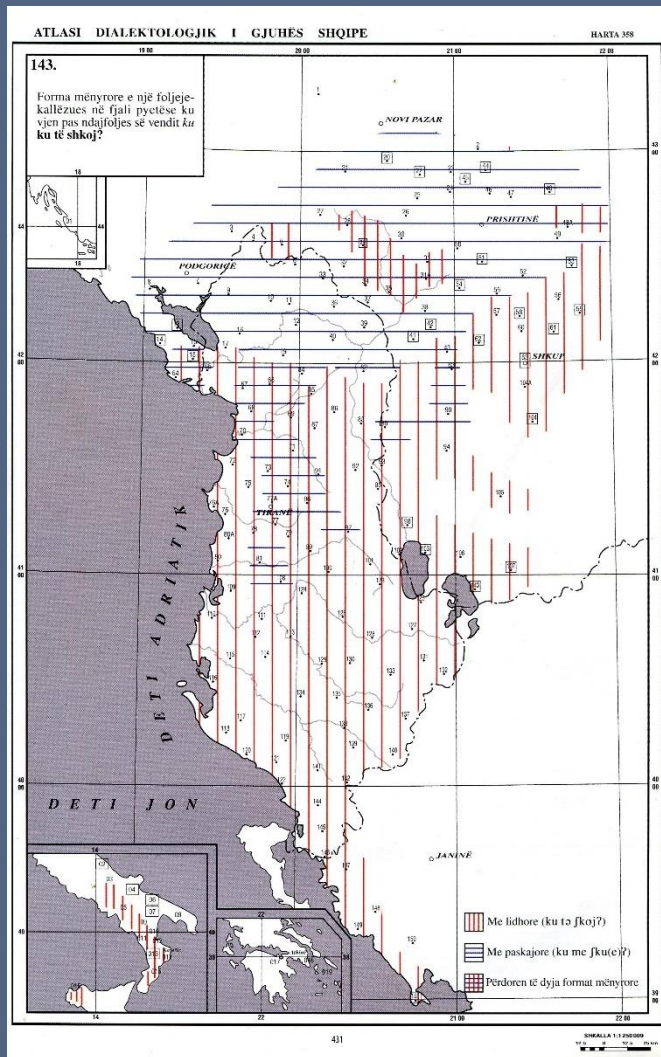
- Two steps
  - Comparison of present data with 4 features from ADGJL
  - Multidimensional Scaling of present data to determine closeness of varieties based on linguistics data and NOT geographic data (Morozova et al, 2019, 2020; Dombrowski, 2014)

# Analysis: Step 1

- Comparison of present data with 4 features from ADGJL
  - RQ1: What are the isoglosses of dialect syntax features and how do they compare with the isoglosses of the ADGJSH?
  - RQ2: Can the methodology of online data collection be used to shed light about the dialect syntactic structures of Albanian?

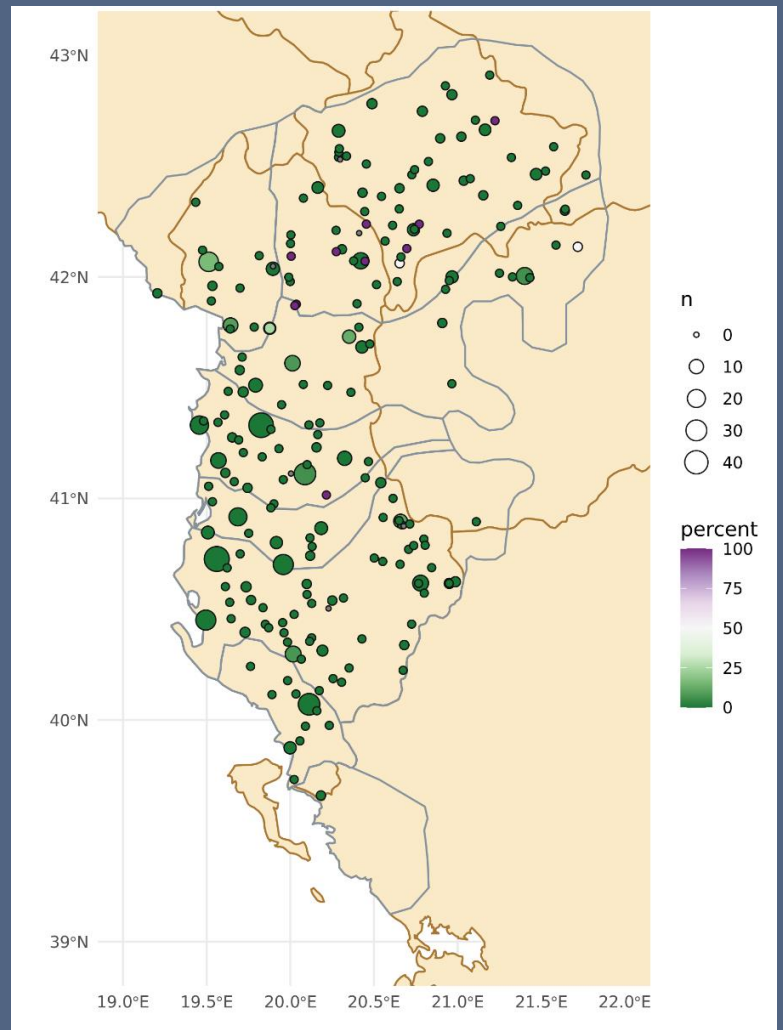
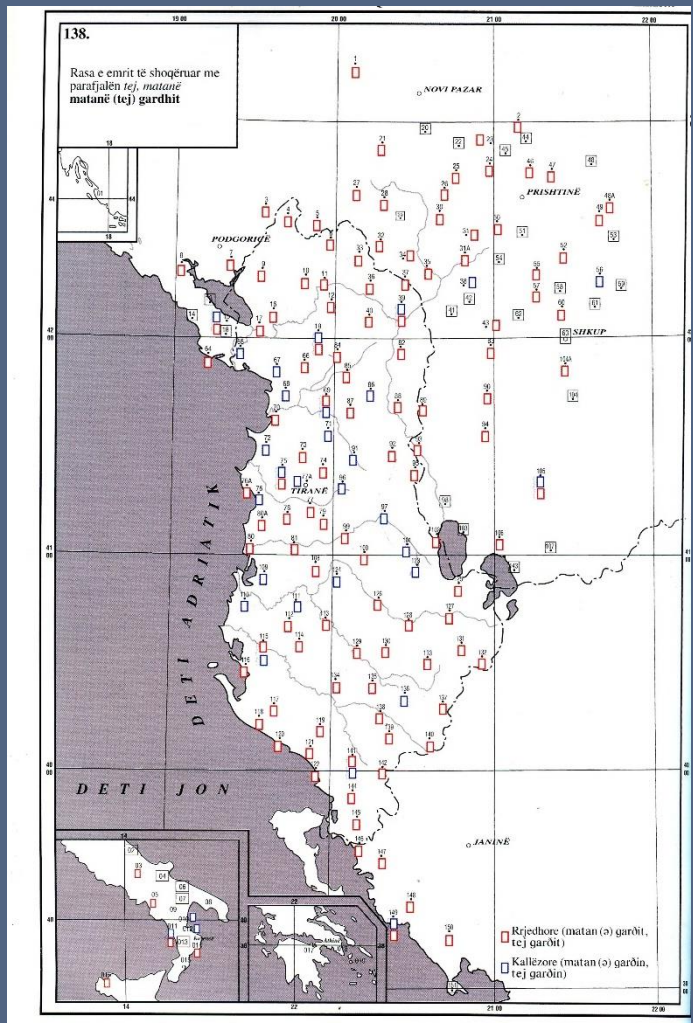
# ku me shku(e) vs. ku të shkoj

## Paskajore me 'me' vs. lidhore



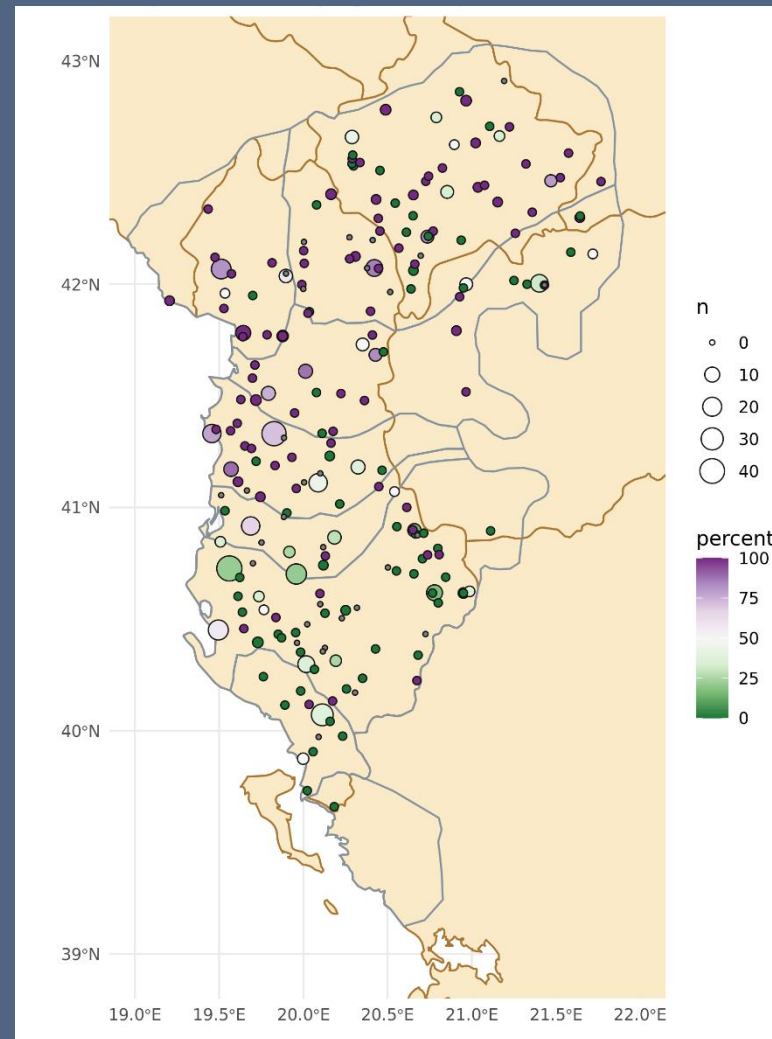
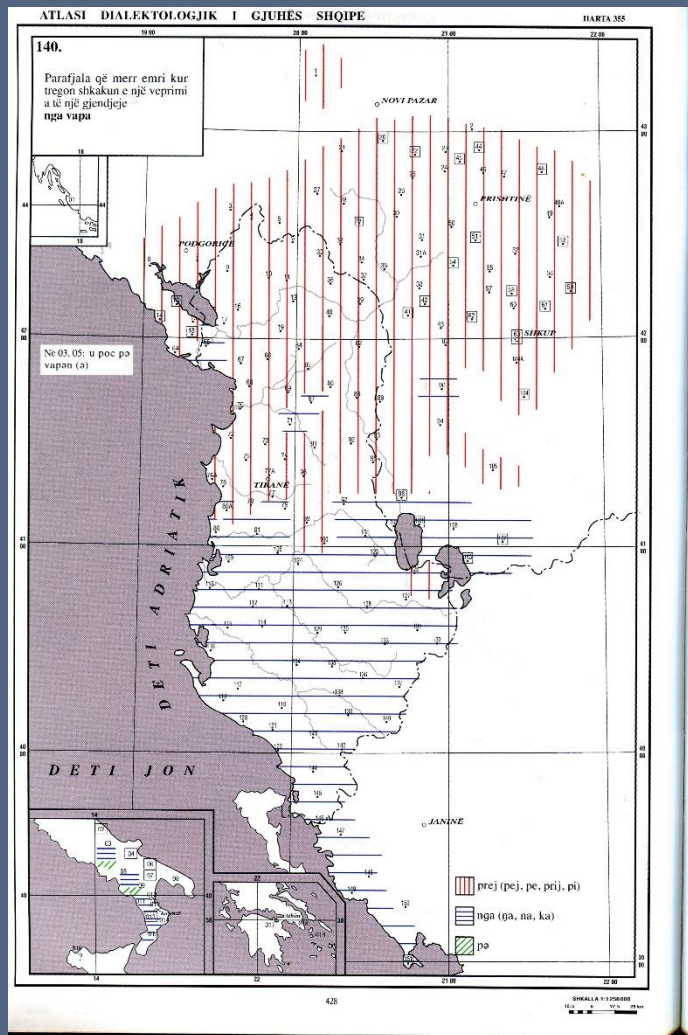
# matanë gardhin vs. matanë gardhit

Togfjalësh parafjalor me parafjalën e rrjedhore 'matanë' + emër në kallëzore vs. (...) + emër në rrjedhore



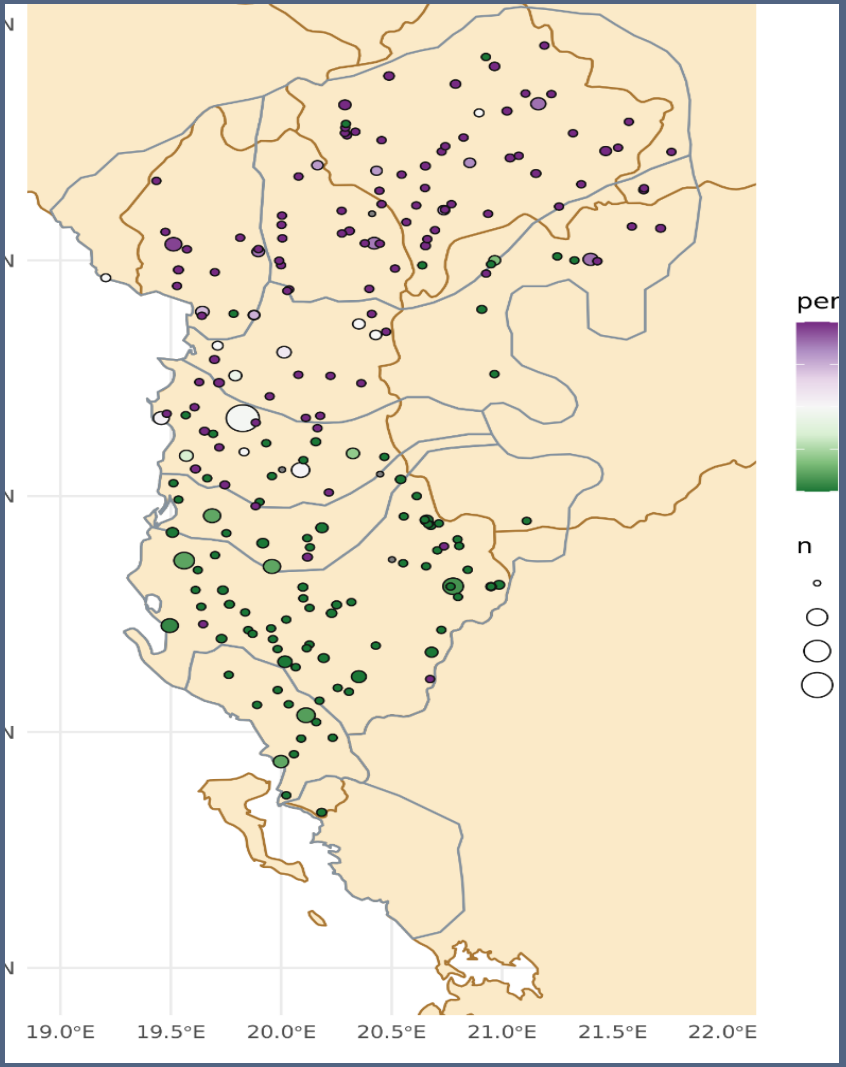
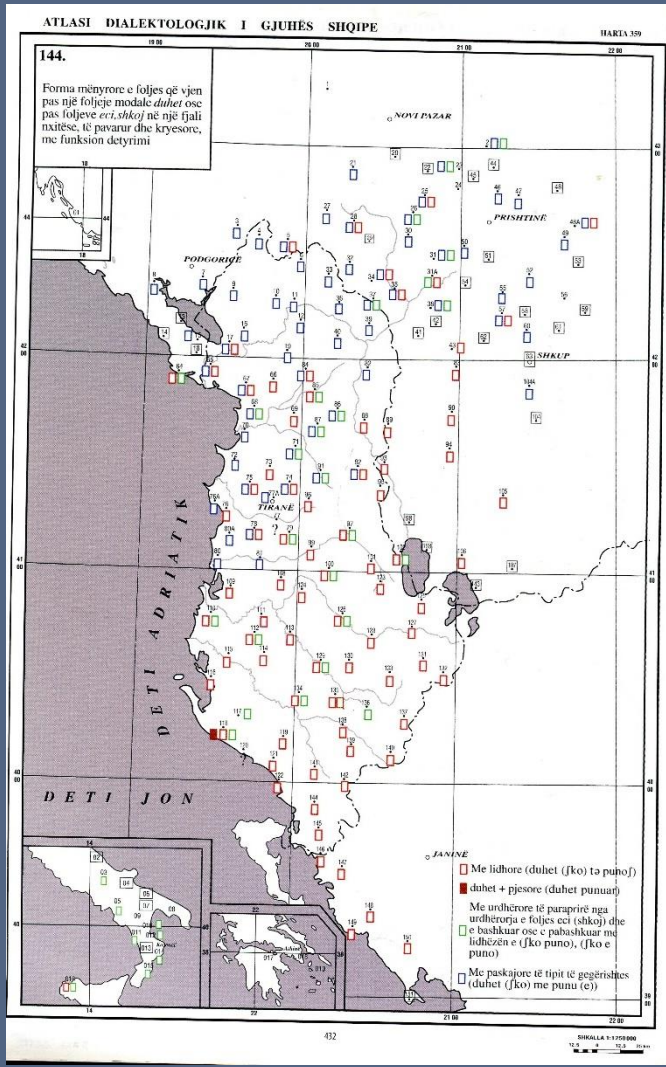
# prej vape vs nga vapa

## Plotës i foljes me emër në rrjedhore vs. plotës i foljes me emër në emërore (me ose pa parafjalë)



# duhet me punu vs duhet të punoj

## Paskajore me 'me' + kallëzues me modalen 'duhet'



# Interim Summary

- RQ1: What are the isoglosses of dialect syntax features and how do they compare with the isoglosses of the ADGJSH?
  - Similar to ADGJSH
- RQ2: Can the methodology of online data collection be used to shed light about the dialect syntactic structures of Albanian?
  - YES

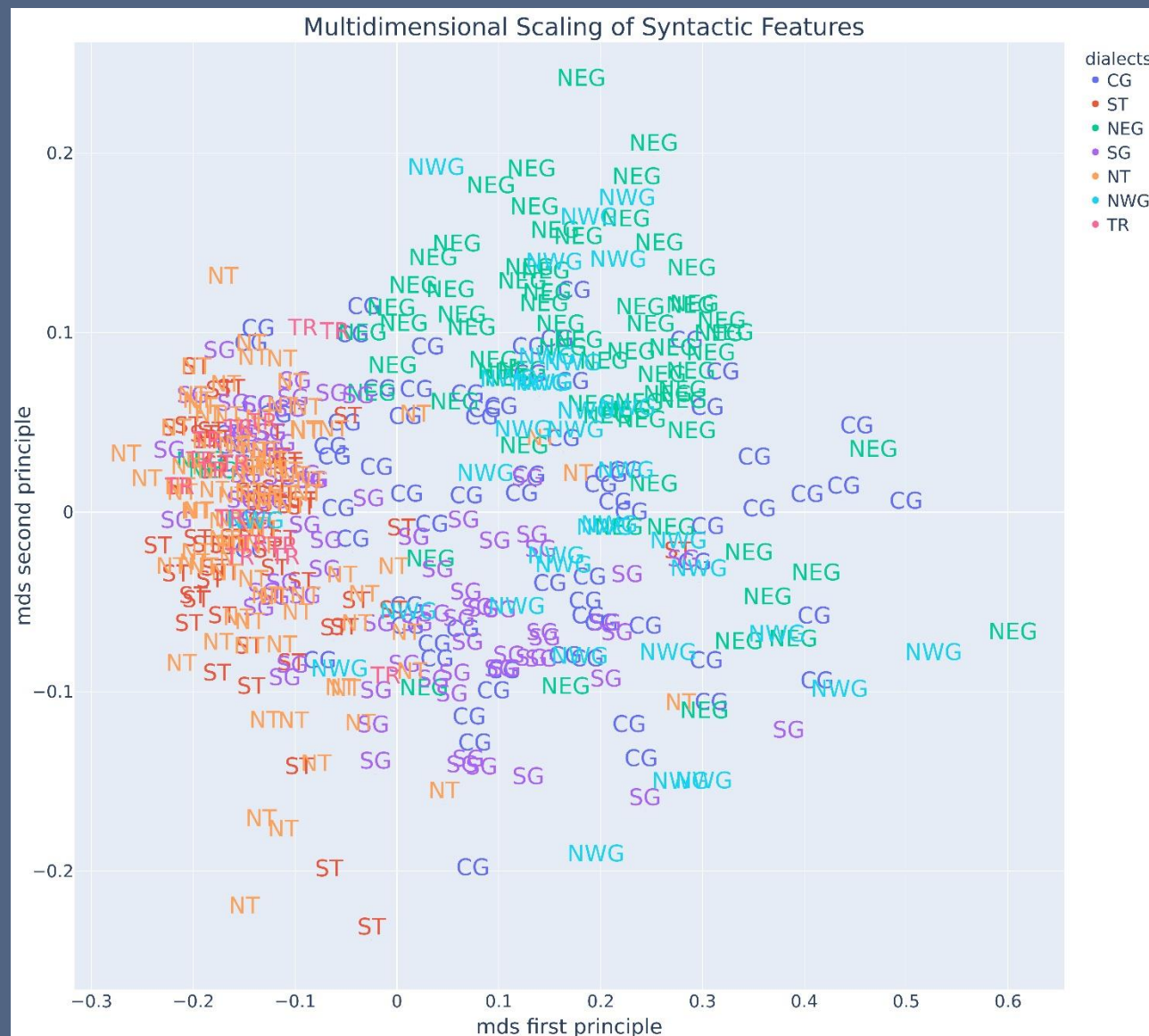


# Analysis: Step 2

- Multidimensional Scaling in dialectometry
  - RQ3: Can dialect syntax features be used to illustrate the historical dialect divisions of Albanian, and, if so, what can they show us?

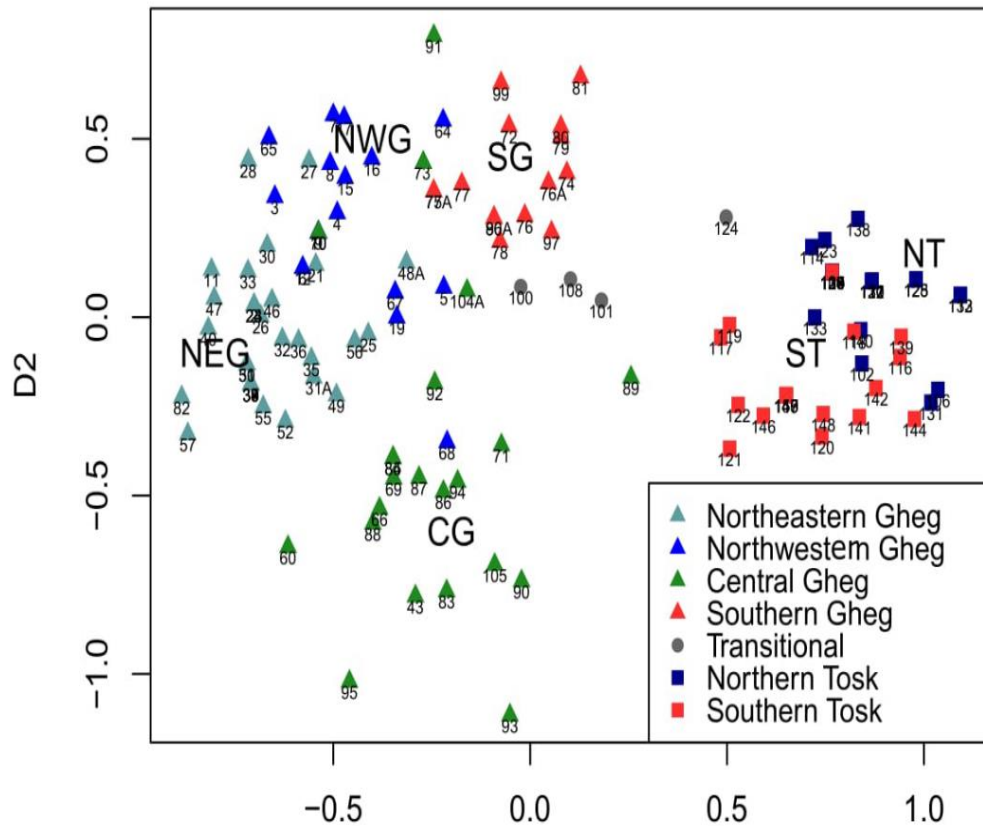
# Closeness of Varieties

- **DIFFERENCE:** between NEG/NWG and ST/NT
- **OVERLAP:** NEG/NWG, SG/CG, NT/ST, TR/Tosk varieties
- CG spread out
- 



# Comparison with Morozova et al (2020)

## Closeness of the Albanian varieties



## Multidimensional Scaling of Syntactic Features



# Discussion and Conclusion

1. What are the isoglosses of dialect syntax features and how do they compare with the isoglosses of the ADGJSH?
  - ❖ Similar
2. Can the methodology of online data collection be used to shed light about the dialect syntactic structures of Albanian?
  - ❖ Yes
3. Can dialect syntax features be used to illustrate the historical dialect divisions of Albanian, and, if so, what can they show us?
  - ❖ Yes, syntactic features play a role in this discussion