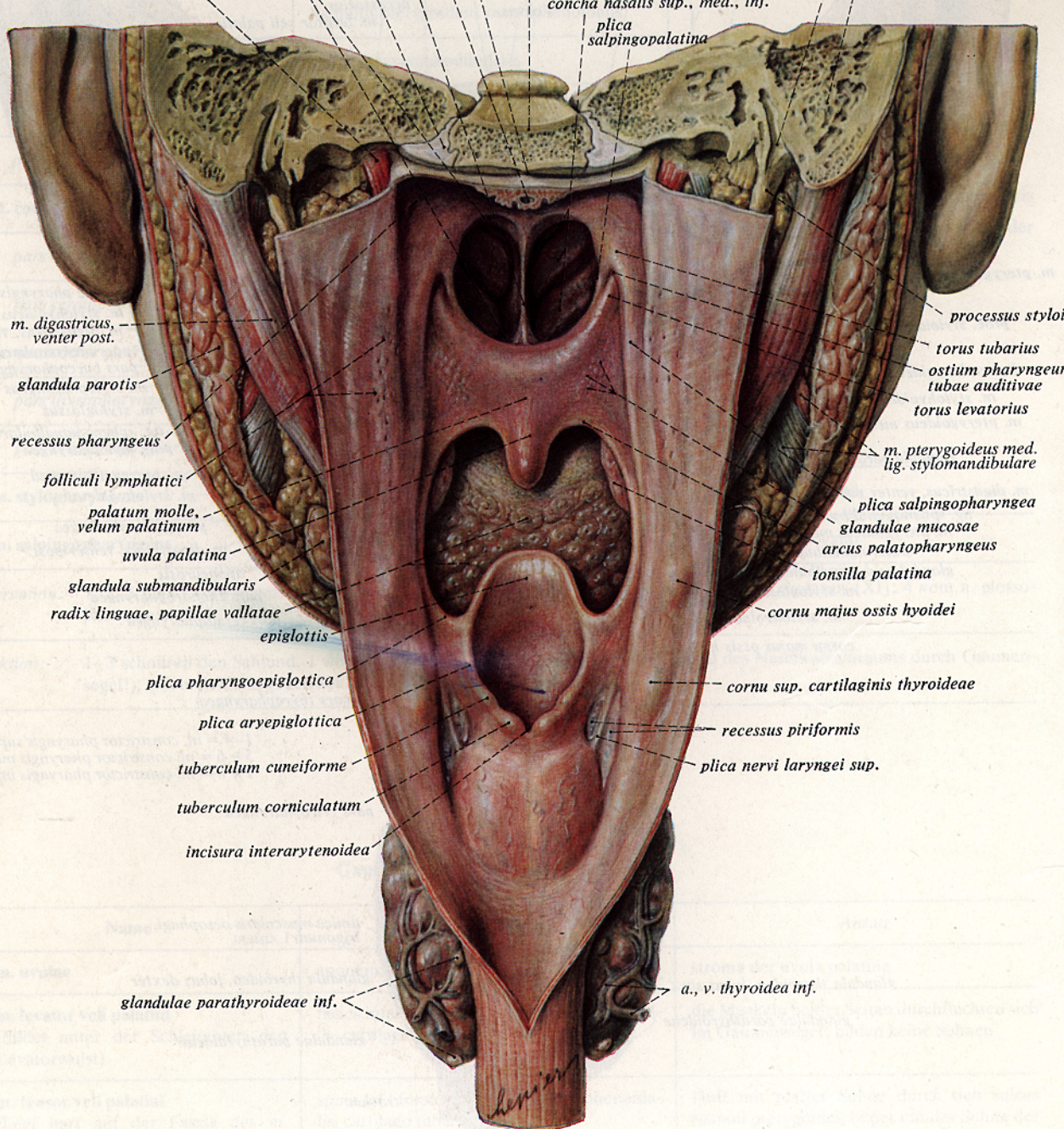
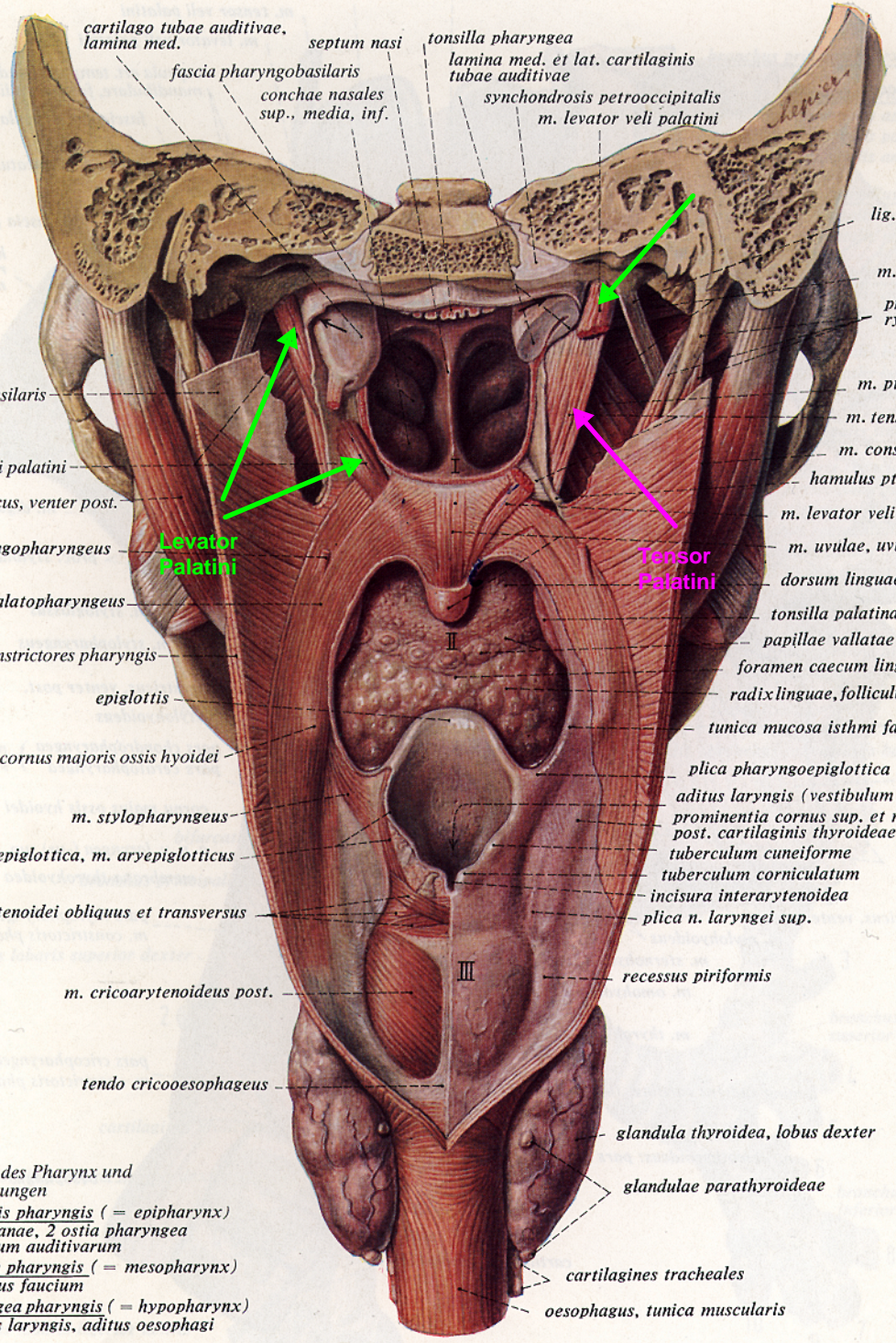


1-4 = m. constrictor pharyngis sup.
5 + 6 = m. constrictor pharyngis medius
7 + 8 = m. constrictor pharyngis inf.





cartilago tubae auditivae, lamina med.
septum nasi
fascia pharyngobasilaris
conchae nasales sup., media, inf.
tonsilla pharyngea
lamina med. et lat. cartilaginis tubae auditivae
synchondrosis petrooccipitalis
m. levator veli palatini

basilaris
veli palatini
icus, venter post.
ingopharyngeus
palatopharyngeus
onstrictores pharyngis
epiglottis
a cornus majoris ossis hyoidei
m. stylopharyngeus
vepiglottica, m. aryepiglotticus
tynoidei obliquus et transversus
m. cricoarytenoideus post.
tendo cricooesophageus

Levator Palatini (green text)
Tensor Palatini (pink text)

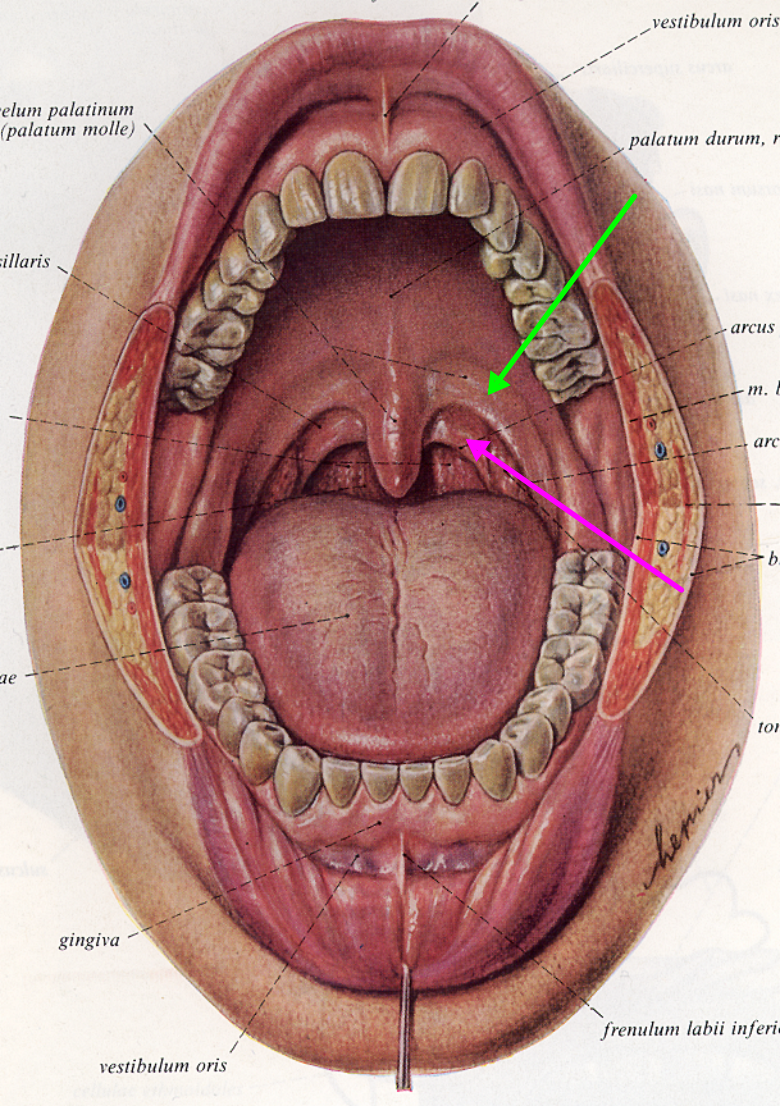
palatopharyngeus
onstrictores pharyngis
epiglottis
a cornus majoris ossis hyoidei
m. stylopharyngeus
vepiglottica, m. aryepiglotticus
tynoidei obliquus et transversus
m. cricoarytenoideus post.
tendo cricooesophageus

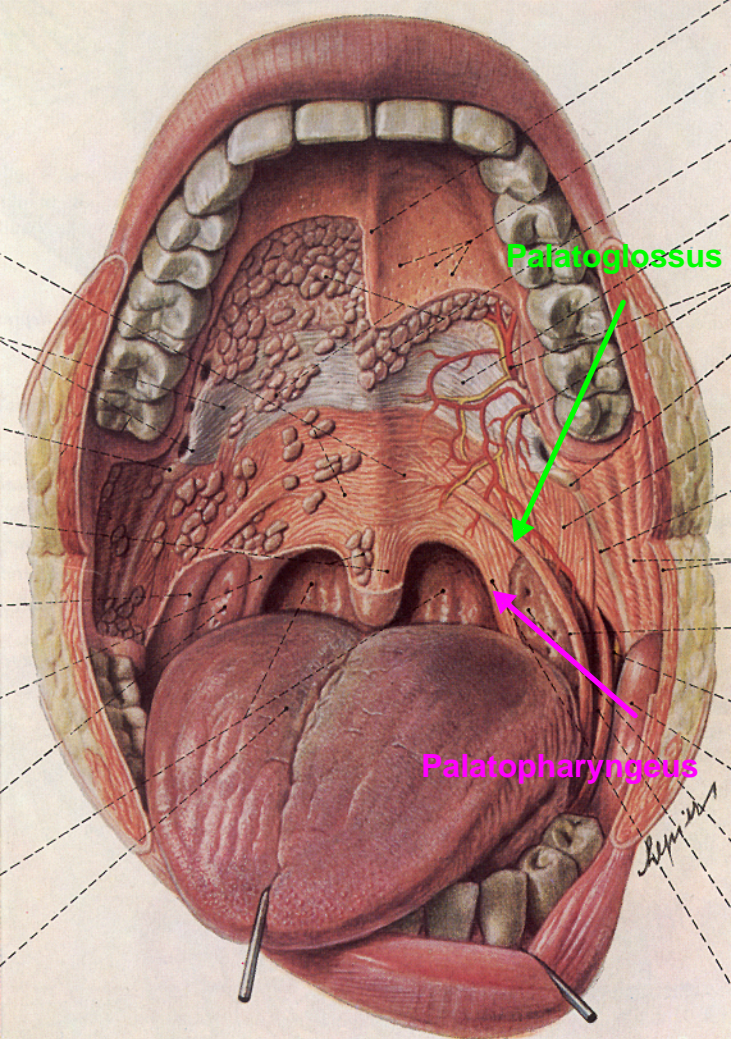
aditus laryngis (vestibulum laryngis)
prominentia cornus sup. et med. post. cartilaginis thyroideae
tuberculum cuneiforme
tuberculum corniculatum
incisura interarytenoidea
plica n. laryngei sup.

recessus piriformis
glandula thyroidea, lobus dexter
glandulae parathyroideae

cartilagineae tracheales
oesophagus, tunica muscularis

musculus pharyngis (= epipharynx)
musculus pharyngis (= mesopharynx)
musculus pharyngis (= hypopharynx)
aditus laryngis, aditus oesophagi





Palatoglossus

Palatopharyngeus

Leydig